

**GORTEF HIGH
PERFORMANCE PTFE
CONVEYOR BELT**

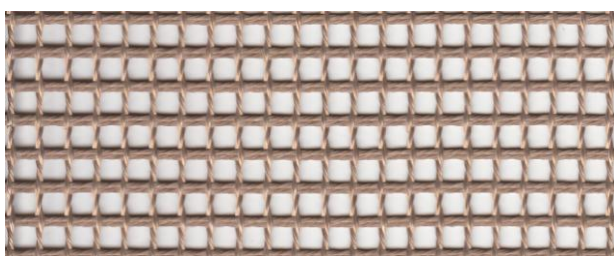
**PRODUCT
SPECIFICATION**

Comment [S1]:

Comment [S2]:

Comment [S3]:

9012



Product	Product category	Coating
PTFE GLASS FABRIC	OPEN MESH SERIES	PTFE

**Excellent properties of
Fiberflon Open Mesh Belts:**

- Outstanding temperature resistance (-170/+260 °C)
- Resistant to corrosive agents
- Low thermal mass
- Controlled porosity
- Superior non-stick surface, easy to clean
- High dielectric strength
- Dimensional stability
- Resistance to UV,IR,HF
- Non-toxic
- Superior tracking

Properties	Value	Unit
Standard width(s) <i>Please ask for other widths</i>	2050, 2500, 2750, 3350	mm
Thickness	1,20	mm
Weight	580	gr/m ²
Mesh size	4 x 4	mm
PTFE content	31	%
Open area	54	%
Elongation	< 1	% at 1.7 kg/cm
Tensile strength	3000	N/5 cm
Temperature resistance	-150 /+260	°C

Note: Nominal thickness, weight and tensile strength values are typical and are not intended as a specification minimum.

Weight Tolerance g/m² = ±%5

All technical data are based on average values. These values are not intended for use in preparing specifications. Technical information contained here in are based on test results GORTEF believes to be reliable, but they are not to be construed in any manner as warranties expressed.

All data is subject to change without notice.

GORTEF HIGH PERFORMANCE PTFE

Unit 35, Level 2,
42-46 Wattle Road,
Brookvale, Sydney,
NSW, Australia ,2100.

TEL : +61 2 9938 4493
FAX : +61 2 9938 4496

www.gortef.com.au
info@gortef.com